



...we protect people!

SECURITY AND PROTECTION IN

# PRODUCTION AND WAREHOUSE LOGISTICS



## BASIC LINE **ZONE PROTECTION**





**GUARANTEED SECURITY AS STANDARD:**

- ⊙ DGUV TYPE-TESTED
- ⊙ COMPLIANT WITH MACHINERY DIRECTIVE 2006/42/EC + ISO 14122-3
- ⊙ EC DECLARATION OF CONFORMITY
- ⊙ CE MARKING
- ⊙ OPERATING INSTRUCTIONS



# BASIC LINE ZONE PROTECTION

- |               |                               |
|---------------|-------------------------------|
| // PAGE 03    | INTENDED USE                  |
| // PAGE 04–07 | DETAILS AND ORDER NUMBERS     |
| // PAGE 08    | SERVICE                       |
| // PAGE 09    | PLANNING YOUR ZONE PROTECTION |
| // PAGE 10–11 | ACCESSORIES                   |

# OUR GUARANTEE TO YOU

## ECONOMICAL, APPEALING AND RESILIENT.



**Intended use:**

The **BASIC LINE PROTECTIVE FENCING SYSTEM** is designed not only for use as a fixed guard to establish a safe distance from hazardous areas, but also to protect people from accidentally coming into contact with objects such as platforms, podiums or gangways from permanent means of access to machinery.

The modular, frameless system comprises standard mesh elements and posts. Flexible mesh customisations and releases can even be incorporated on-site.

**COMPLIANT WITH MACHINERY DIRECTIVE 2006/42/EC + ISO 14122-3\***

\* Our company is certified in line with EN 1090.

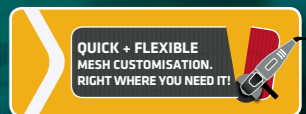
## THE PRODUCT RANGE:

System height:  
2000 mm

Usable module length:  
2000 mm

Special floor clearance:  
8 mm

Surface finish:  
Zinc finish





**BASIC LINE** ZONE PROTECTION  
DETAILS AND ORDER NUMBERS

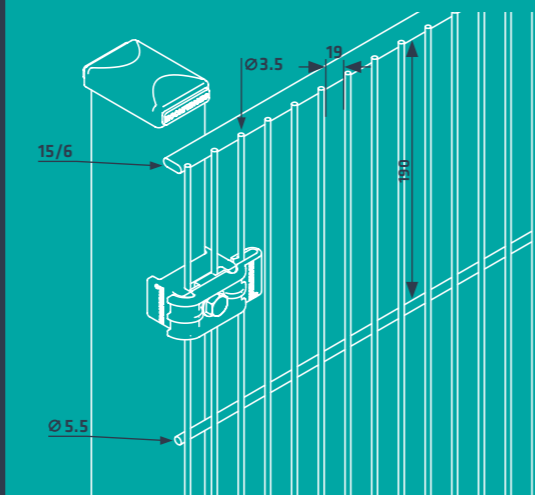
A safe distance from the hazardous area  
-> See page 9

**Usable module length**  
2000 mm ↔ 2000 mm

**Standard posts**  
Rectangular steel profiles and a welded base plate incl. assembly set (post cap, drive-in mesh support, plastic clamping element with steel screw)  
Profile: Width x depth 40 x 60 mm

**Mesh elements**  
Horizontal, round wires on one side, 5.5 mm, or flat steel 15/6 mm;  
vertical wires 3.5 mm, spot-welded, galvanised in accordance with ISO 1461

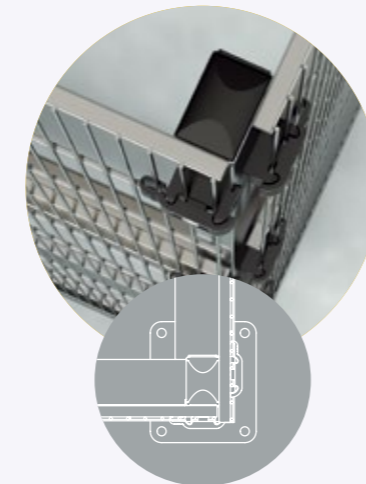
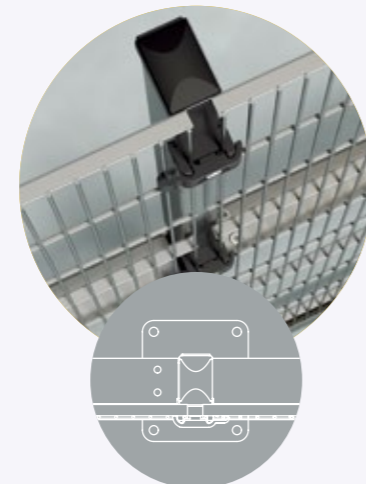
**Mesh size**  
Distance between the horizontal wires of 190 mm, standard distance between the vertical wires of 19 mm. This amounts to mesh dimensions of 19 x 190 mm



Row post, inner-corner configuration

Row, middle and end posts

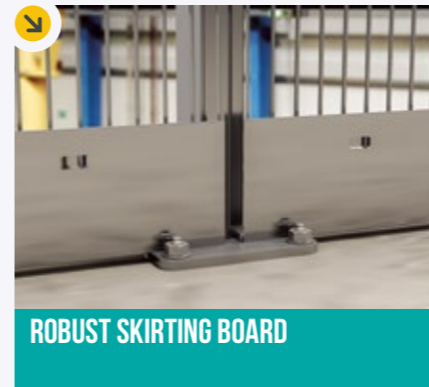
Universal corner post, outer-corner configuration



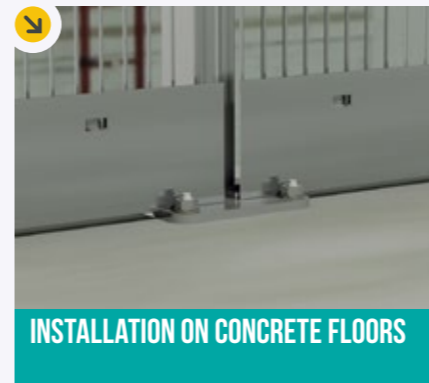
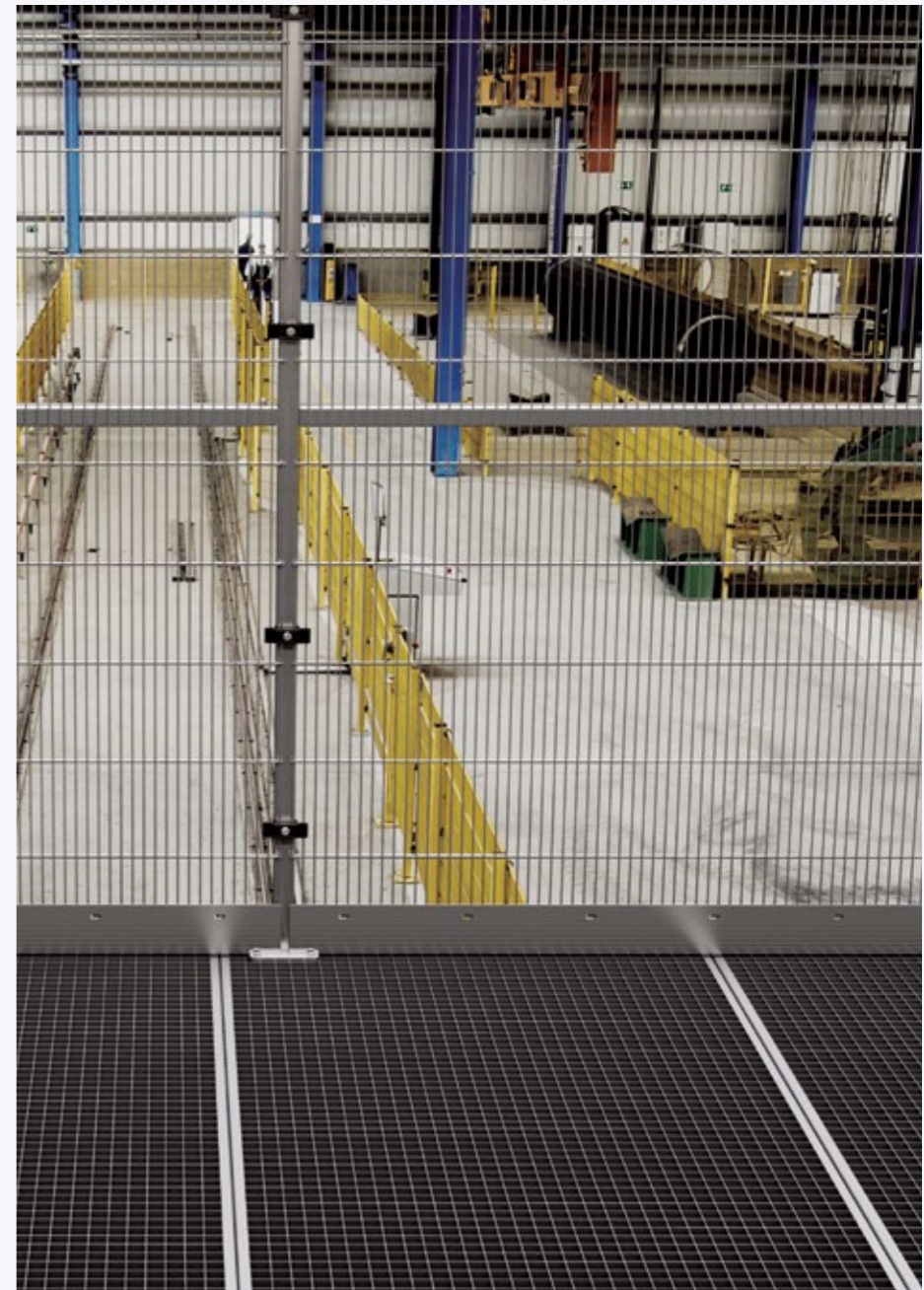
UNDETACHABLE FASTENING ELEMENTS



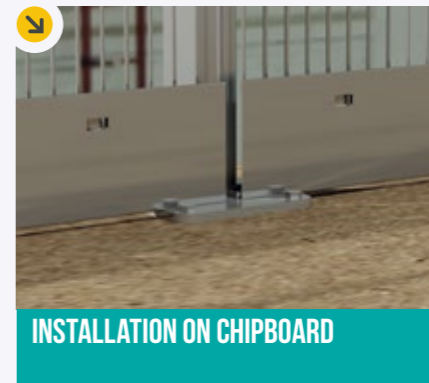
HIGH-STRENGTH CROSS-BEAMS



ROBUST SKIRTING BOARD



INSTALLATION ON CONCRETE FLOORS



INSTALLATION ON CHIPBOARD

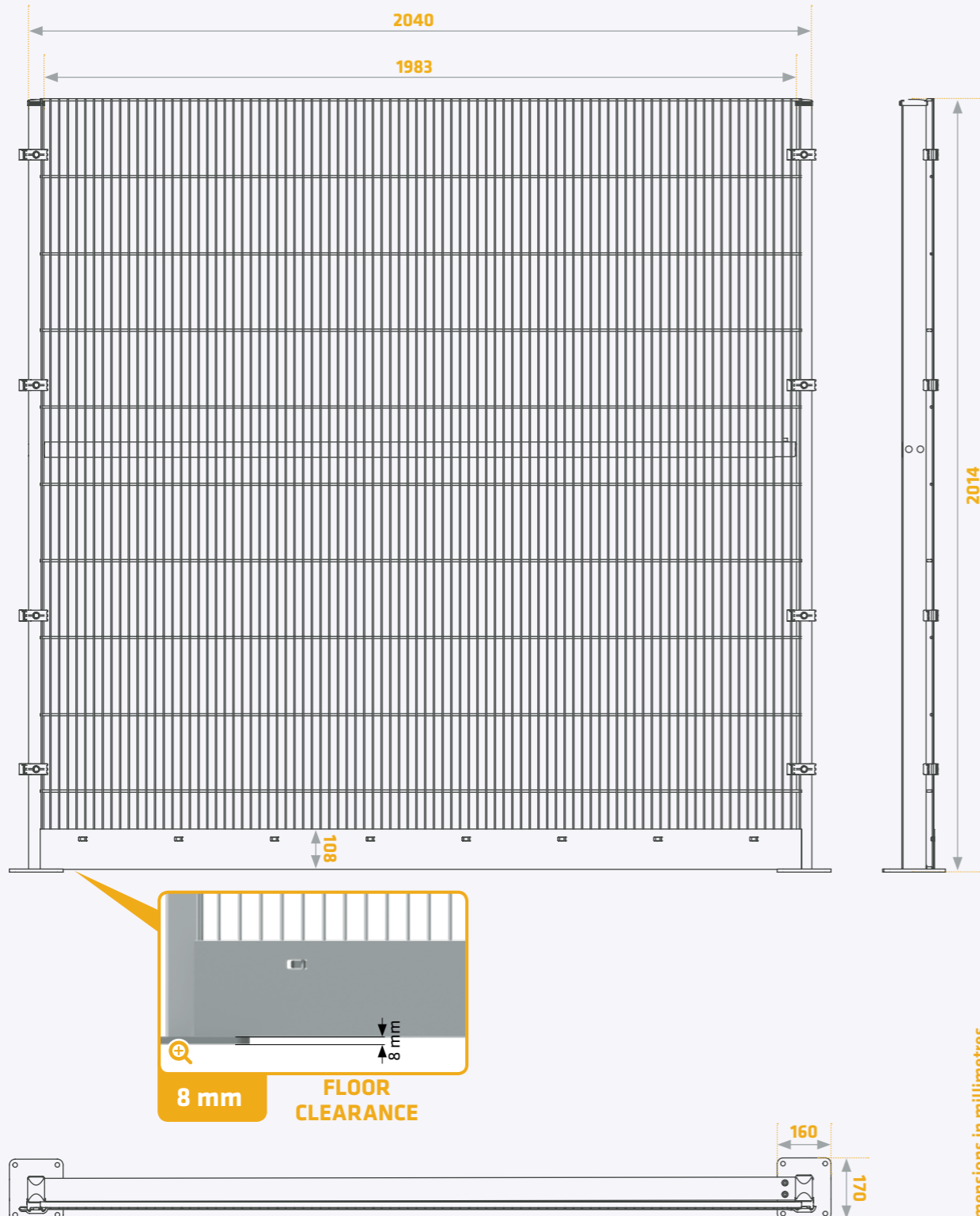


INSTALLATION ON GRIDS

# BASIC LINE ZONE PROTECTION

ECONFENCE®  
protection · german made

## DETAILS AND ORDER NUMBERS



All dimensions in millimetres

## MESH ELEMENT // ORDER NUMBER

2000 mm

Designation	Order no	Execution	Dimensions (WxH) in mm	Installation height in mm
Mesh element	B20020019-VZ	Zinc finish	1983 x 2006	2014

## POSTS // ORDER NUMBERS

2000 mm

Designation	Order no	Execution	Dimensions (DxWxH) in mm	Installation height in mm
Row post	BRP2000-VZ-S10	Zinc finish	60 x 40 x 2010	2010
Universal corner post	BEPLR2000-VZ-S10	Zinc finish	60 x 40 x 2010	2010

## CROSS-BEAM // ORDER NUMBER

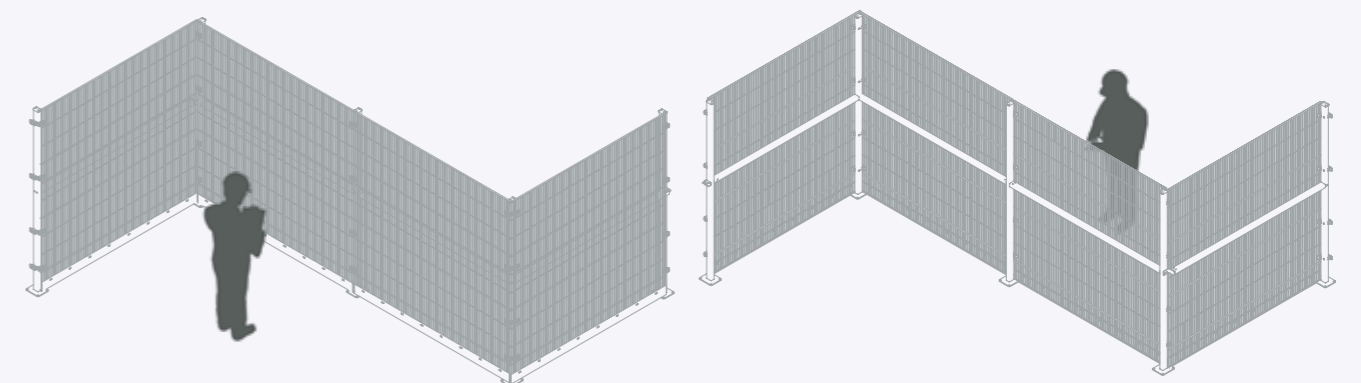
2000 mm

Designation	Order no	Execution	Dimensions (DxWxH) in mm	Installation height in mm
Cross-beam	R00090	Zinc finish	60 x 40 x 1957	1120

## SKIRTING BOARD // ORDER NUMBER

2000 mm 100 mm

Designation	Order no	Execution	Dimensions (WxH) in mm	Installation height in mm
Skirting board	TSB-10087	Zinc finish	1983 x 105	108



Technical specifications subject to change.  
Other widths and heights – as well as powder-coated versions/designs – available on request. Tel: +49 (0) 5223 791995-0 | Fax: +49 (0) 5223 791995-90

# OUR COMPREHENSIVE SERVICES ARE THE CORNERSTONES OF YOUR SUCCESS.



## A PERSONAL APPROACH AND SPEEDY SERVICE FROM INITIAL CONTACT THROUGH TO ORDER ACCEPTANCE.

The concept of "service" appears to have become an overused expression that doesn't always live up to its promises. But for us, we take great pride in providing a premium service and we strive to achieve this at every stage of your project. This applies to everything from our personal and comprehensive consultations and needs assessments right through to planning, production and our aftersales service that you can take advantage of for years to come. This is the very cornerstone of the work we do and our customers have been placing their trust in us for over three decades.



## 2D/3D PLANNING DATA

We will make all necessary CAD files available to you for construction and planning purposes.



## CAD PLANNING

We will be happy to plan and sketch an entire protective fencing layout to discuss with you in detail and establish whether you would like to go ahead with your order.

## PLANNING YOUR ZONE PROTECTION

The BASIC LINE protective fencing system is designed not only for use as a fixed guard to establish a safe distance from hazardous areas, but also to protect people from accidentally coming into contact with objects such as platforms, podiums or gangways from permanent means of access to machinery.

**If you are planning to feature guards in your zone protection system, you must remember to complete a relevant risk assessment. This requires the following standards to be taken into account:**

### ISO 12100

Safety of machinery

### ISO 13857

Safety distances to prevent hazard zones being reached by upper and lower limbs

### ISO 14120

Guards

### ISO 14119

Interlocking devices associated with guards

### ISO 14122-3

Permanent means of access to machinery

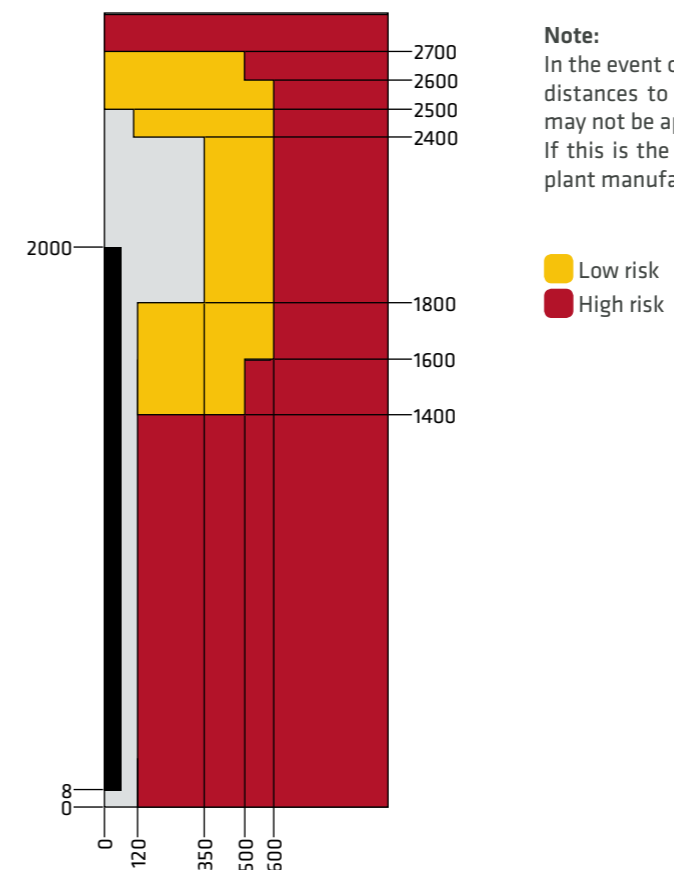
### Evaluation of the hazardous area

The safety distance of the protective fencing system is defined in accordance with the corresponding EN standard. This process involves drawing up a floor plan of the machine or system.

### Risk analysis and assessment

The risk assessment must be carried out and evaluated by the customer in accordance with the relevant harmonised standards in order to identify the required mesh size, height, floor clearance, distance from the hazardous area, and intended use.

## SAFETY DISTANCES ACCORDING TO ISO 13857



### Note:

In the event of a risk posed by slips or misuse, the use of safety distances to prevent hazardous zones being reached by lower limbs may not be appropriate in accordance with ISO 13857, Annex B. If this is the case, then the safety distances must be defined by the plant manufacturer in accordance with the risk assessment.



#### BASIC LINE ZONE PROTECTION OVERVIEW / ACCESSORIES AND EXTRAS

Order no	Designation	Fig.
ZB31004	Clamping element, black plastic, clamping range 4 mm, with pre-assembled steel screw, ST 8x40 mm	1
ZB21008	Mesh support, row post (drive-in version), black plastic, for a post profile measuring 60x40x2 mm	2
ZB21012	Mesh support, corner post (drive-in version), black plastic, for a post profile measuring 60x40x2 mm	3
TSM-10061	Assembly set, counter plate 1 x TSB-10377 plate 4 x DIN 125A washers, 10.5 4 x DIN 934-8.8 nuts, M10 4 x DIN 933-8.8 screws, M10x75	4
TSM-10059	Assembly set, cross-beam support 1 x TSM-10050 cross-beam support 4 x DIN 125A washers, 8.4 4 x DIN 912 screws, M8x20	5
TSM-10060	Assembly set, inner-corner mounting angle 1 x TSM-10052 corner connector 2 x DIN 125A washers, 8.4 2 x DIN 912 screws, M8x20	6
ZB10075	Pin chuck for drive-in bracket	7
ZB40005	Mesh customisations and recesses according to customer layout	
ZB40020	Planning/construction of a protective fencing system and accompanying components with CAD, in 2D or 3D, with floor plan and component labelling	
	Technical specifications subject to change.	

Fig. 1

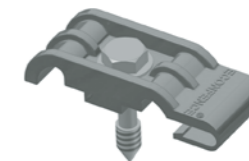


Fig. 2

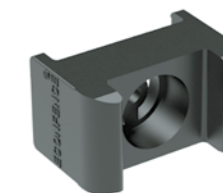


Fig. 3

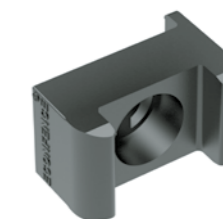


Fig. 4

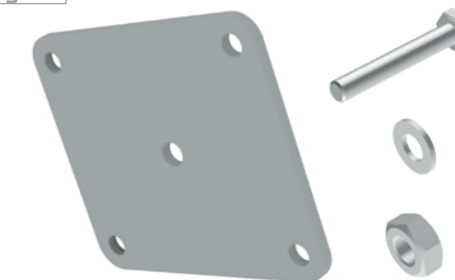


Fig. 5

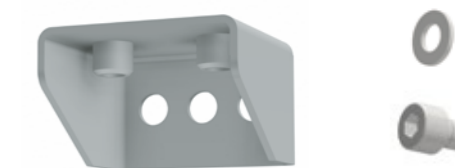


Fig. 6

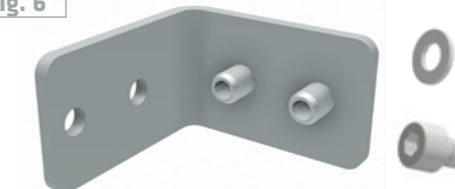
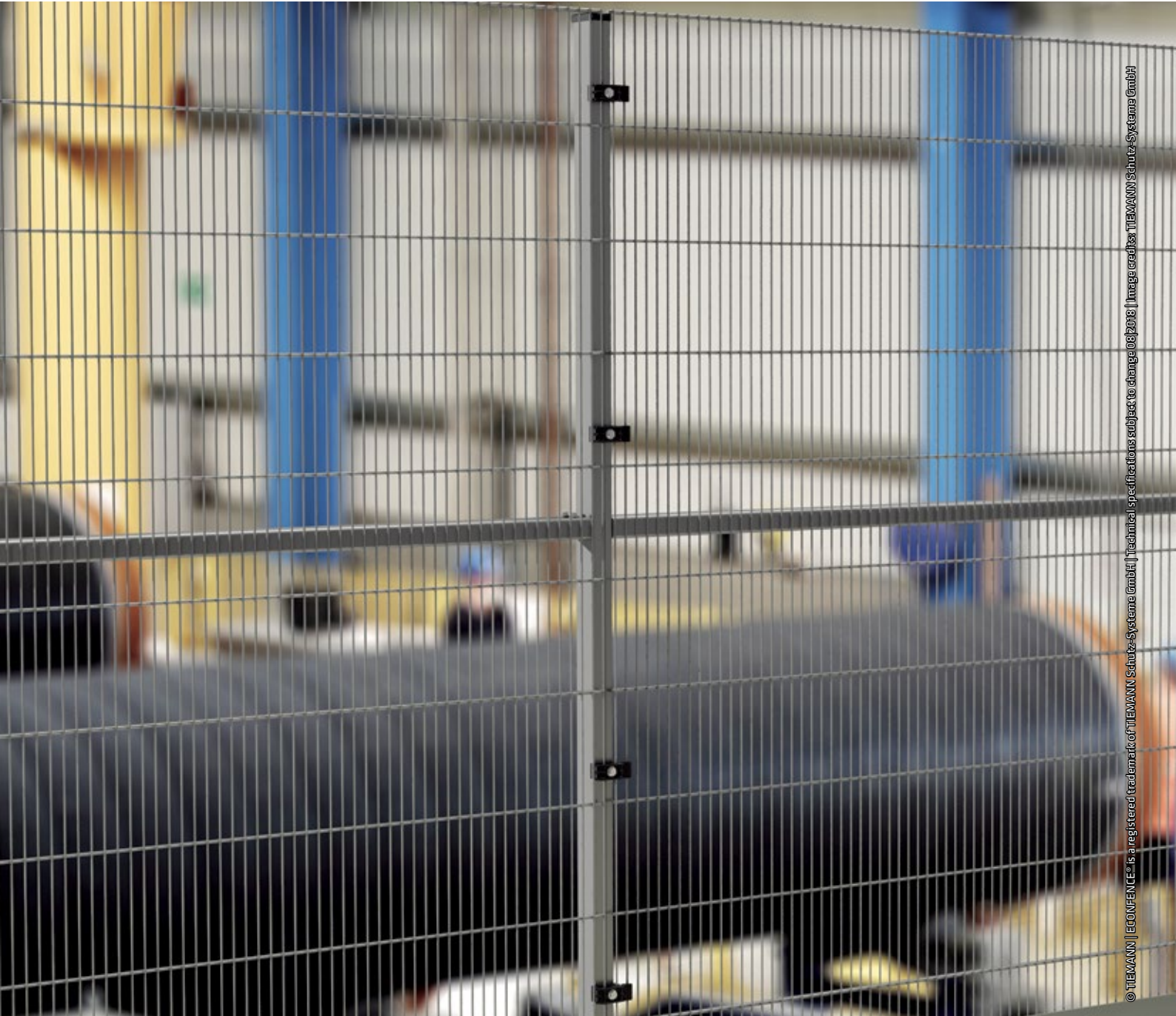


Fig. 7



Technical specifications subject to change.

Other widths and heights available on request: Tel: +49 (0) 5223 791995-0 | Fax: +49 (0) 5223 791995-90



© TIEMANN | ECONFENCE® is a registered trademark of TIEMANN Schutz-Systeme GmbH | Technical specifications subject to change 08/2018 | Image credits: TIEMANN Schutz-Systeme GmbH



...we protect people!

## TIEMANN

Schutz-Systeme GmbH  
Lübbecker Straße 16  
32257 Bünde | Germany  
T+49 (0) 5223 791995-0  
F+49 (0) 5223 791995-90  
info@econference.com  
www.econference.com



### GUARANTEED SECURITY AS STANDARD:

- ✔ DGV TYPE-TESTED
- ✔ COMPLIANT WITH MACHINERY DIRECTIVE 2006/42/EC + ISO 14122-3
- ✔ EC DECLARATION OF CONFORMITY
- ✔ CE MARKING
- ✔ OPERATING INSTRUCTIONS

